

“Press to Fit” Encapsulating Instructions

Products Shown:

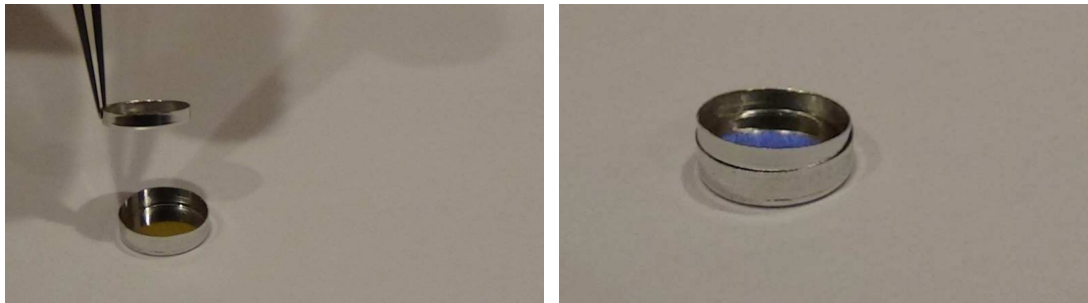
- **Part Number: 5016717.2 Sample pan and lid - Kit**

- o Part Number: 5416717.2 Sample pan

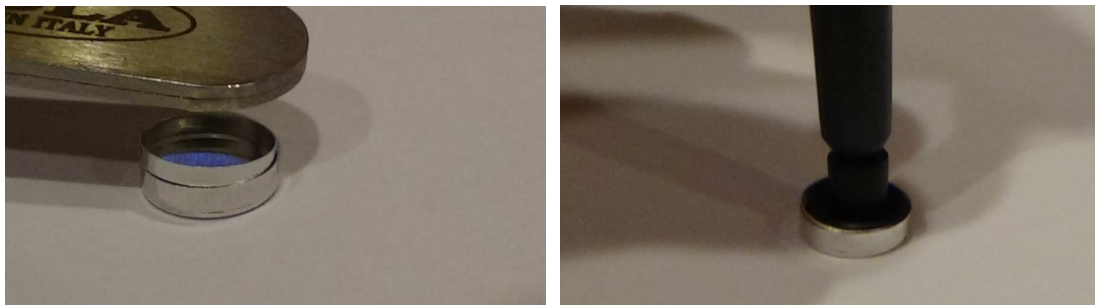
- o Part Number: 5316500.2 Lid for 5416717.2 Sample pan

The following is often used as a best practice procedure for encapsulating your samples:

- 1) Center sample in pan and place the lid “cup up” with a pair of tweezers



- 2) Press the lid into the pan with tweezer handle (left) to align; press to base with recommended soft tip suction manipulator (right) to lightly form lid around sample.



- 3) You can also use tweezer probes to form lid around sample
CAUTION: Pressing too hard with tweezers can deform bottom of pan

Please call if you have questions or otherwise need us.

Thermal Support

Hayesville, NC 28904

Direct: [404.381.1883](tel:404.381.1883) Office: [678.580.3822](tel:678.580.3822)